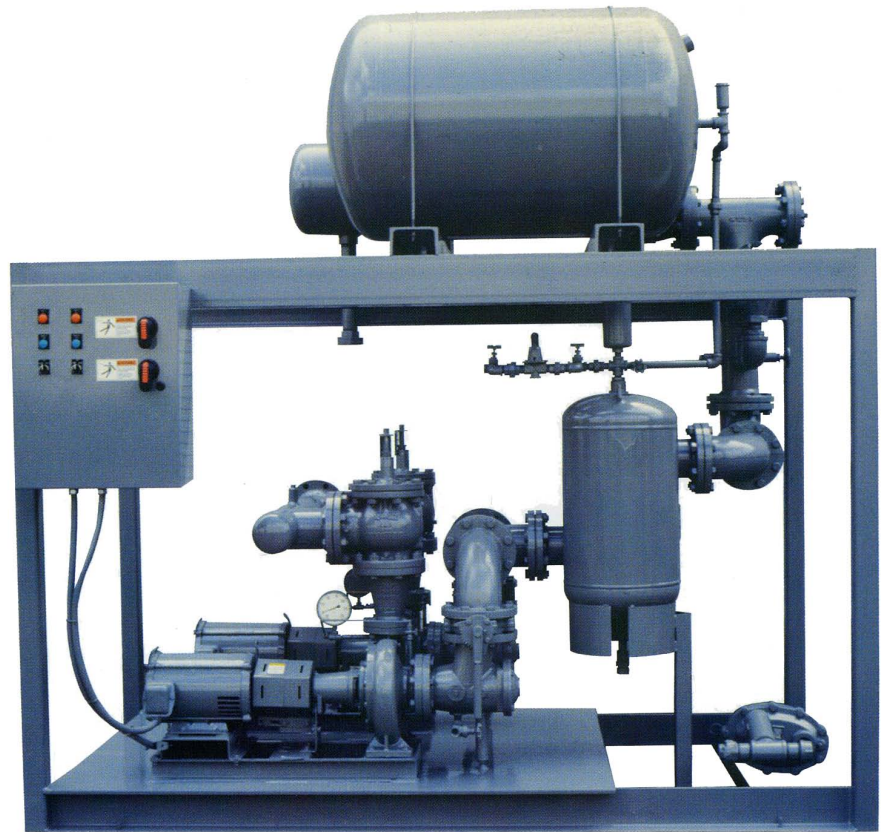


The modern approach to comfort heating of schools, industrial plants, hospitals, office buildings, apartments, and commercial buildings using rugged Bell & Gossett components.

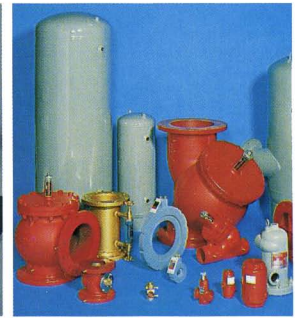
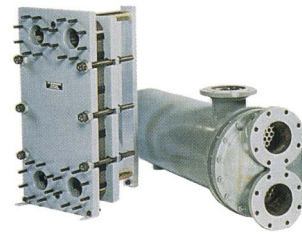


Heat Transfer Packages

TRUE UNIT RESPONSIBILITY AND DESIGN FLEXIBILITY TO MEET
YOUR SPECIFIC APPLICATION NEEDS FROM THE SYSTEM EXPERTS

Industry Leader for both HVAC Components and Packages

Bell & Gossett has been both a leader and pioneer in the HVAC market for over 75 years. We manufacture and market a complete line of centrifugal pumps, heat exchangers, air control devices, steam valves and traps to cover a broad range of your application needs. We are able to package several combinations of the components we manufacture to produce a heat transfer package with true "unit responsibility" that is specifically tailored to meet your requirements.



We can promise you personalized attention because we're backed by a worldwide network of factory trained representatives. We work with you to analyze your total system and determine exactly what products are required for a complete custom pre-packaged system to provide optimal performance for your application. Single source "unit responsibility" guarantees the components will interface properly and simplifies future maintenance and technical support.

Our dedicated Packaged Systems engineering team, with both electrical and mechanical expertise, utilizes state-of-the-art CAD techniques and programs to ensure the design and fabrication of your package meet the most stringent industry standards.

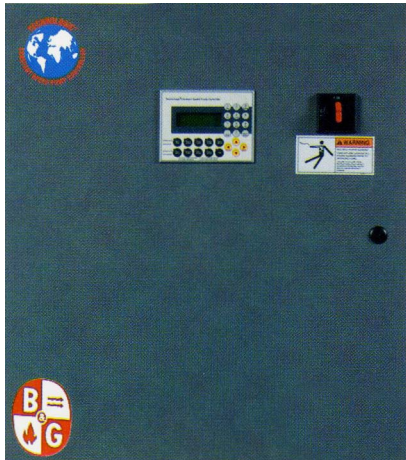
Our 550,000 square foot facility is dedicated to manufacturing quality hydronic equipment and packaged systems. We provide complete systems designed by Bell & Gossett engineers, assembled and factory tested to ensure proper interface of components as well as overall system performance:

- Performance testing capabilities up to 9,000 GPM and 500 HP
- ASME certified welders
- Complete package UL listed, ETL optional

Wide Range of Custom Electrical Control Choices

Basic Starter Panel

- NEMA 1 enclosure (optional NEMA 4 & 12 for rugged environments)
- UL listed /ETL or cUL certified
- Constant speed IEC starters with overload protection
- One-or-multiple pump control
- Short circuit protection via fuses or circuit breakers
- Pump run indicator lights



Technologic Constant Speed Pump Control Panel

All the Features of the Basic Starter Panel PLUS...

- Greater energy efficiency with 6 staging methods available for up to 6 parallel pumps
- User selectable pump staging methods based on: KW, amps, flow, pressure, temperature and diff temperature
- Exclusive Bell & Gossett Microprocessor based controller with non-volatile memory
- Built-in redundancy to ensure continuous operation
- Automatic transfer to standby pump upon primary pump failure
- Manual and automatic operation
- User friendly plain English display with on-screen Help functions and "EZ Start"
- Log menu for historical information of key events
- Serial Communication:
 - RS-485 utilizing BACnet MS/TP, Modicon Modbus, Johnson Controls Metasys N2
 - RS-232 for LonWorks (requires extra hardware)

Technologic Variable Speed Controls

For tremendous operating cost savings potential and superior operating performance, a variable speed control option is available. Bell & Gossett has engineered a complete family of controllers that precisely match controller features to the needs of each specific application. From a basic one-or-two-pump system to highly sophisticated systems with advanced energy savings and communications via multiple signal protocols, Bell & Gossett can meet your needs.



Xylem |'zīləm|

- 1) The tissue in plants that brings water upward from the roots;
- 2) a leading global water technology company.

We're 12,500 people unified in a common purpose: creating innovative solutions to meet our world's water needs. Developing new technologies that will improve the way water is used, conserved, and re-used in the future is central to our work. We move, treat, analyze, and return water to the environment, and we help people use water efficiently, in their homes, buildings, factories and farms. In more than 150 countries, we have strong, long-standing relationships with customers who know us for our powerful combination of leading product brands and applications expertise, backed by a legacy of innovation.

For more information on how Xylem can help you, go to www.xylem.com



Xylem Inc.
10661 Newkirk Street
Dallas, TX 75220
Phone: 800-786-7480
www.xylem.com/brands/bellgossett

Bell & Gossett is a trademark of Xylem Inc. or one of its subsidiaries.
© 2012 Xylem Inc. D-310E May 2012